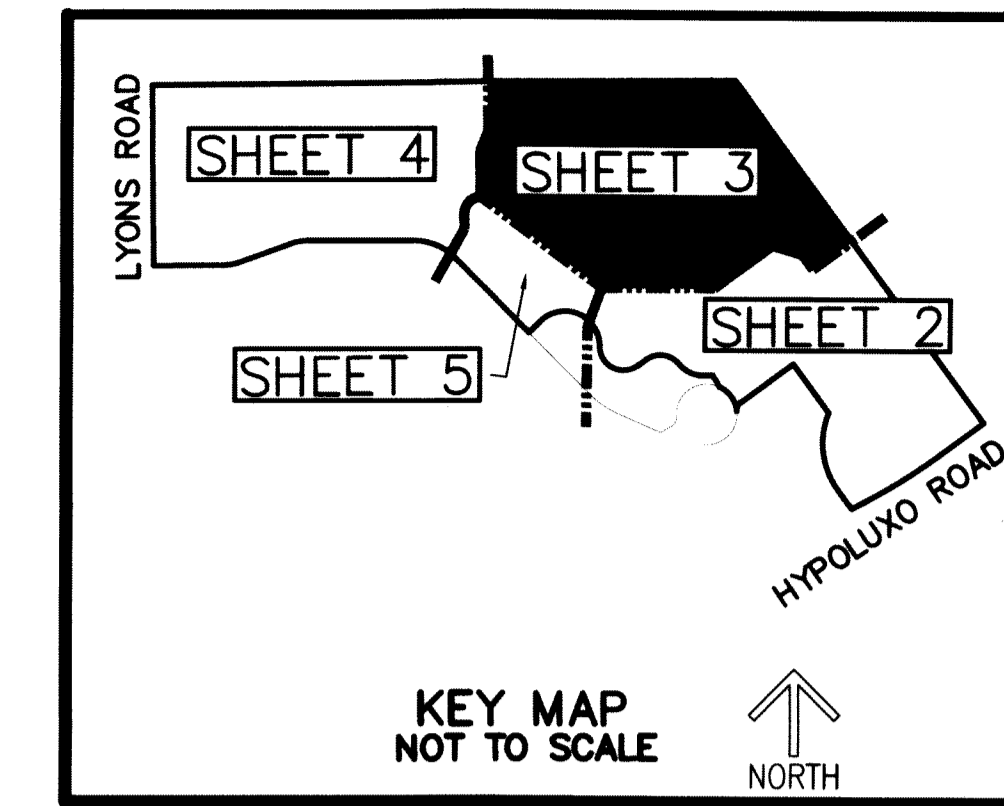
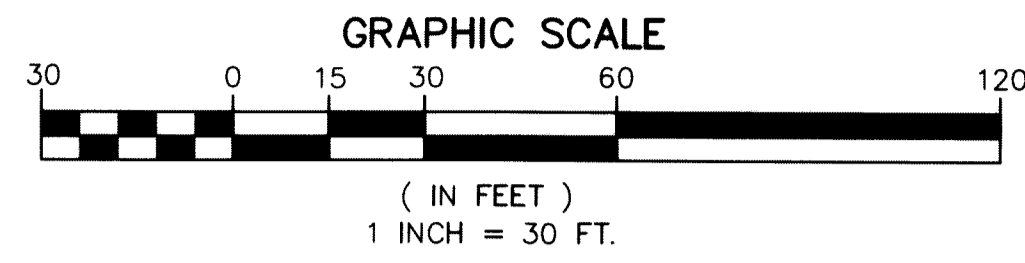


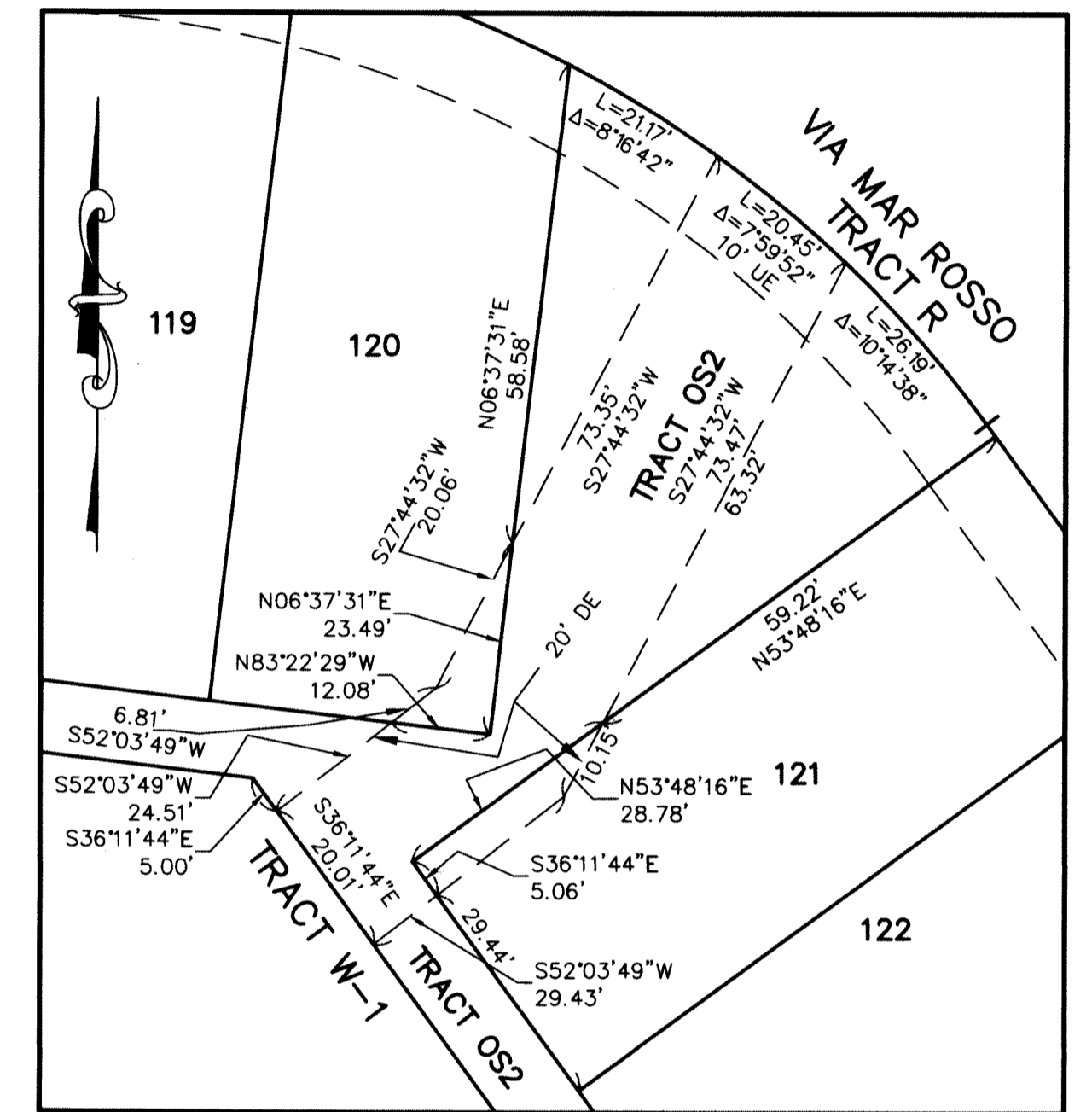
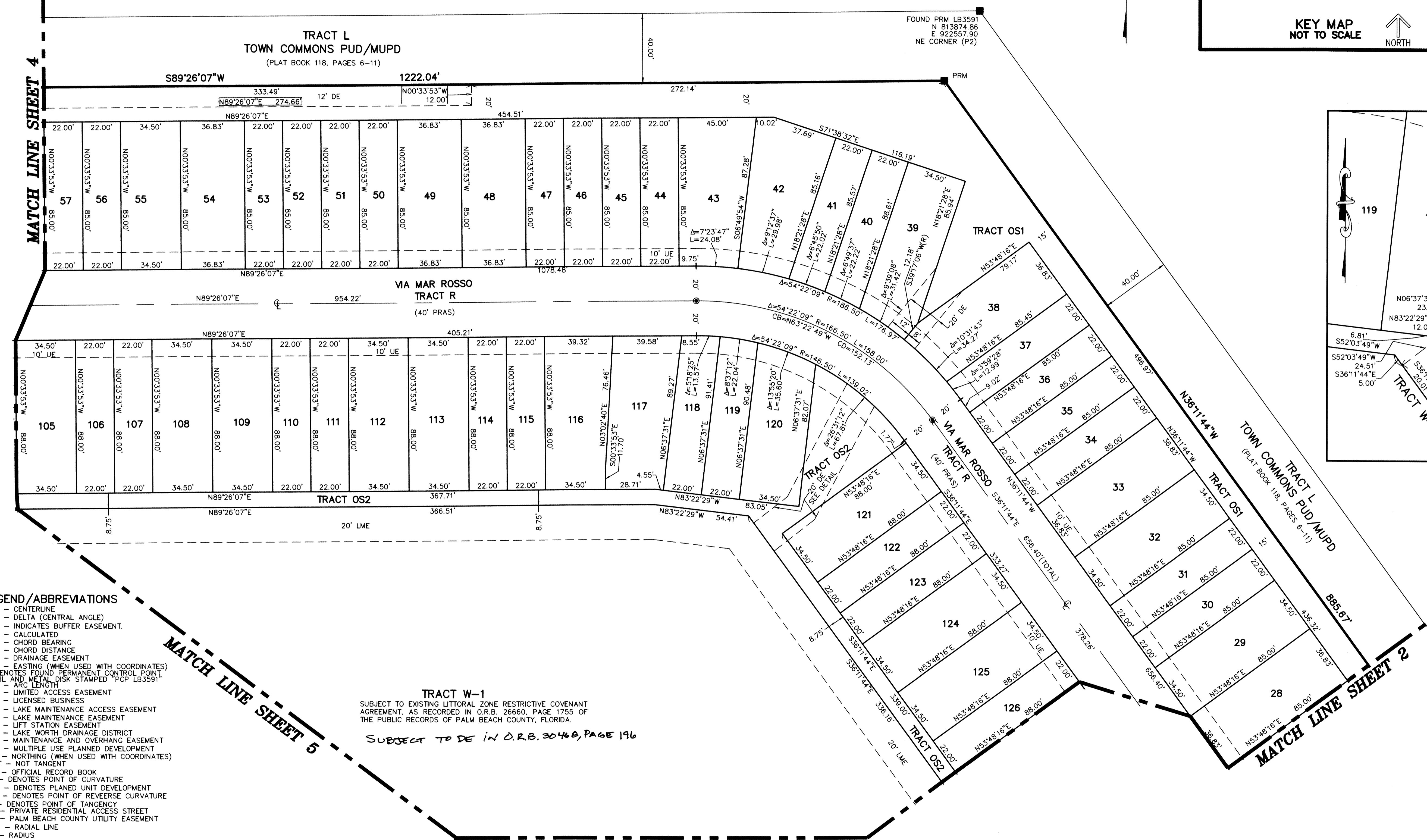
TOWN COMMONS PUD REPLAT

BEING A REPLAT OF PARCEL A AND TRACT W, TOWN COMMONS PUD/MUPD, ACCORDING TO THE PLAT THEREOF, AS RECORDED IN PLAT BOOK 118, PAGES 6 THROUGH 11 OF THE PUBLIC RECORDS OF PALM BEACH COUNTY, FLORIDA, LYING IN SECTIONS 7 AND 8, TOWNSHIP 45 SOUTH, RANGE 42 EAST, PALM BEACH COUNTY, FLORIDA

THIS INSTRUMENT PREPARED BY
 DAVID P. LINDLEY
 OF
CAULFIELD and WHEELER, INC.
 SURVEYORS - ENGINEERS - PLANNERS
 7900 GLADES ROAD, SUITE 100
 BOCA RATON, FLORIDA 33434 - (561)392-1991
 CERTIFICATE OF AUTHORIZATION NO. LB3591



SHEET 3 OF 5



- LEGEND / ABBREVIATIONS**
- ⊕ - CENTERLINE
 - Δ - DELTA (CENTRAL ANGLE)
 - B.E. - INDICATES BUFFER EASEMENT
 - (C) - CALCULATED
 - CB - CHORD BEARING
 - CD - CHORD DISTANCE
 - DE - DRAINAGE EASEMENT
 - E - EASTING (WHEN USED WITH COORDINATES)
 - PCP - DENOTES FOUND PERMANENT CONTROL POINT NAIL AND METAL DISK STAMPED "PCP LB3591"
 - L - ARC LENGTH
 - LAE - LIMITED ACCESS EASEMENT
 - LB - LICENSED BUSINESS
 - LMAE - LAKE MAINTENANCE ACCESS EASEMENT
 - LME - LAKE MAINTENANCE EASEMENT
 - LSE - LIFT STATION EASEMENT
 - L.W.D.D. - LAKE WORTH DRAINAGE DISTRICT
 - MOHE - MAINTENANCE AND OVERHANG EASEMENT
 - MUPD - MULTIPLE USE PLANNED DEVELOPMENT
 - N - NORTHING (WHEN USED WITH COORDINATES)
 - NT - NOT TANGENT
 - O.R.B. - OFFICIAL RECORD BOOK
 - PC - DENOTES POINT OF CURVATURE
 - PUD - DENOTES PLANNED UNIT DEVELOPMENT
 - PRC - DENOTES POINT OF REVERSE CURVATURE
 - PT - DENOTES POINT OF TANGENCY
 - PRAS - PRIVATE RESIDENTIAL ACCESS STREET
 - PBCUE - PALM BEACH COUNTY UTILITY EASEMENT
 - (R) - RADIAL LINE
 - R - RADIUS
 - UE - UTILITY EASEMENT
 - (PLAT) - DENOTES TOWN COMMONS - PLAT ONE, AS RECORDED IN PLAT BOOK 99, PAGES 68-69 OF THE PUBLIC RECORDS OF PALM BEACH COUNTY, FLORIDA.
 - (P2) - DENOTES TOWN COMMONS PUD/MUPD, AS RECORDED IN PLAT BOOK 118, PAGES 6-11 OF THE PUBLIC RECORDS OF PALM BEACH COUNTY, FLORIDA.
 - PRM - DENOTES SET PERMANENT REFERENCE MONUMENT 4" x 4" x 24" CONCRETE MONUMENT WITH ALUMINUM DISK STAMPED "C&W PRM LB3591" UNLESS NOTED OTHERWISE
 - PCP - DENOTES PERMANENT CONTROL POINT NAIL AND METAL DISK STAMPED "PCP LB3591"
 - PRMND - DENOTES PERMANENT REFERENCE MONUMENT FOUND NAIL AND DISC STAMPED "PRM" LB 3591
 - PCPND - DENOTES PERMANENT REFERENCE MONUMENT FOUND NAIL AND DISC NO. 7072
 - SIRC - DENOTES SET 5/8" IRON ROD WITH CAP STAMPED "C&W LB3591"

TRACT W-1
 SUBJECT TO EXISTING LITTORAL ZONE RESTRICTIVE COVENANT AGREEMENT, AS RECORDED IN O.R.B. 26660, PAGE 1755 OF THE PUBLIC RECORDS OF PALM BEACH COUNTY, FLORIDA.
 SUBJECT TO DE IN O.R.B. 30460, PAGE 196

NOTES
 COORDINATES, BEARINGS AND DISTANCES
 COORDINATES SHOWN ARE GRID
 DATUM = NAD 83 1990 ADJUSTMENT
 ZONE = FLORIDA EAST
 LINEAR UNIT = US SURVEY FEET
 COORDINATE SYSTEM 1983 STATE PLANE
 TRANSVERSE MERCATOR PROJECTION
 ALL DISTANCES ARE GROUND, UNLESS STATED OTHERWISE
 SCALE FACTOR = 1.0000221
 GROUND DISTANCE X SCALE FACTOR = GRID DISTANCE
 N00°33'53"W (PLAT BEARING) 00°24'06" = BEARING ROTATION
 N00°57'59"W (GRID BEARING) (PLAT TO GRID)
 BEARING BASIS LINE COUNTERCLOCKWISE